

**REGIONAL SPECIALISED METEOROLOGICAL CENTRE-TROPICAL CYCLONES, NEW DELHI
TROPICAL WEATHER OUTLOOK**

DEMS-RSMC SPECIAL TROPICAL CYCLONES NEW DELHI DATED 28.02.2022

TROPICAL WEATHER OUTLOOK FOR NORTH INDIAN OCEAN (THE BAY OF BENGAL AND ARABIAN SEA) VALID FOR NEXT 120 HOURS ISSUED AT 0600 UTC OF 28.02.2022 BASED ON 0300 UTC OF 28.02.2022.

BAY OF BENGAL:

YESTERDAY'S CYCLONIC CIRCULATION OVER STRAIT OF MALACCA & ADJOINING SOUTH ANDAMAN SEA LAY OVER SOUTH ANDAMAN SEA & ADJOINING EQUATORIAL INDIAN OCEAN (EIO) AT 0900 UTC OF YESTERDAY, THE 27TH FEBRUARY. IT PERSISTED OVER THE SAME REGION AT 0300 UTC OF TODAY, THE 28TH FEBRUARY, 2022 WITH VERTICAL EXTENSION UPTO 5.8 KM ABOVE MEAN SEA LEVEL. IT IS LIKELY TO MOVE WEST-NORTHWESTWARDS AND UNDER ITS INFLUENCE, A LOW PRESSURE AREA IS LIKELY TO FORM OVER SOUTHEAST BAY OF BENGAL (BOB) DURING NEXT 24 HOURS. IT IS LIKELY TO MOVE FURTHER TOWARDS SRI LANKA COAST DURING SUBSEQUENT 48 HOURS.

SCATTERED TO BROKEN LOW AND MEDIUM CLOUDS WITH EMBEDDED INTENSE TO VERY INTENSE CONVECTION LAY OVER SOUTHEAST BOB, SOUTH OF LATITUDE 10.0°N & ADJOINING EIO AND SOUTH ANDAMAN SEA. MINIMUM CLOUD TOP TEMPERATURE IS MINUS 93 DEG C. SCATTERED LOW AND MEDIUM CLOUDS WITH EMBEDDED MODERATE TO INTENSE CONVECTION LAY OVER SOUTHWEST BOB, SOUTH OF LATTITUDE 10.0N AND WEAK TO MODERATE CONVECTION LAY OVER EASTCENTRAL BOB, REST PARTS OF OF SOUTHEAST BOB & NORTH ANDAMAN SEA.

PROBABILITY OF CYCLOGENESIS (FORMATION OF DEPRESSION) DURING NEXT 120 HRS:

24 HOURS	24-48 HOURS	48-72 HOURS	72-96 HOURS	96-120 HOURS
NIL	NIL	NIL	NIL	NIL

ARABIAN SEA:

SCATTERED LOW AND MEDIUM CLOUDS WITH EMBEDDED MODERATE TO INTENSE CONVECTION LAY OVER SOUTHEAST ARABIAN SEA OFF SOUTH KERALA COAST. SCATTERED LOW AND MEDIUM CLOUDS WITH EMBEDDED ISOLATED WEAK TO MODERATE CONVECTION LAY OVER REST OF SOUTH ARABIAN SEA. SCATTERED LOW AND MEDIUM CLOUDS NORTHWEST & WESTCENTRAL ARABIAN SEA AND COMORIN AREA.

PROBABILITY OF CYCLOGENESIS (FORMATION OF DEPRESSION) DURING NEXT 120 HRS:

24 HOURS	24-48 HOURS	48-72 HOURS	72-96 HOURS	96-120 HOURS
NIL	NIL	NIL	NIL	NIL

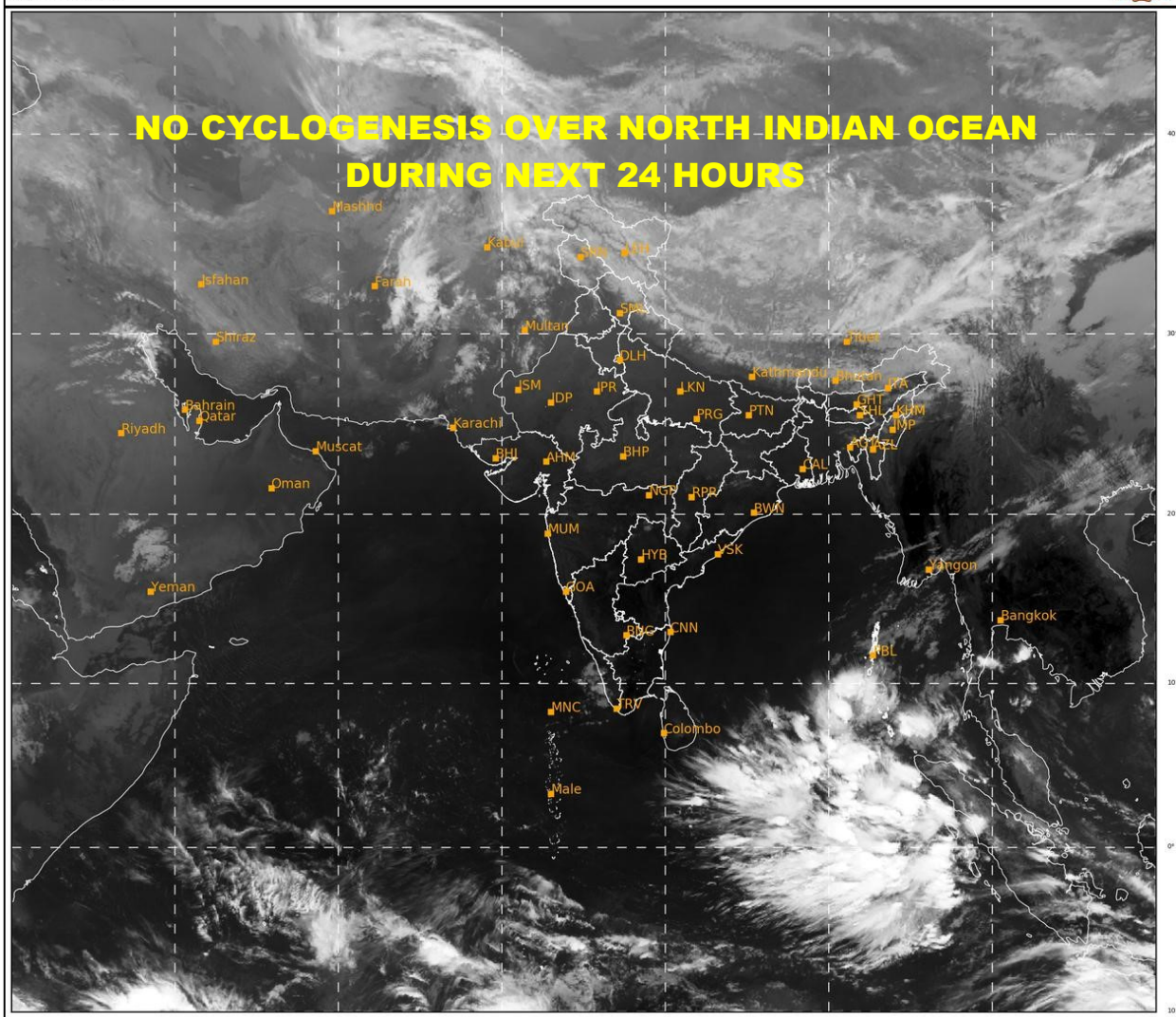
REMARKS: NIL

SAT : INSAT-3D IMG
IMG_TIR1 10.8 um
LIC Mercator

28-02-2022/(0300 to 0327) GMT
28-02-2022/(0830 to 0857) IST



NO CYCLOGENESIS OVER NORTH INDIAN OCEAN DURING NEXT 24 HOURS



475

940

IMD, DELHI

PROBABILITY OF CYCLOGENESIS (FORMATION OF DEPRESSION):NIL: 0%, LOW: 1-33%, , MODERATE: 34-66% AND HIGH: 67-100% This is a guidance Bulletin for the WMO/ESCAP Panel Member countries,. Please visit respective National websites for Country specific Bulletins